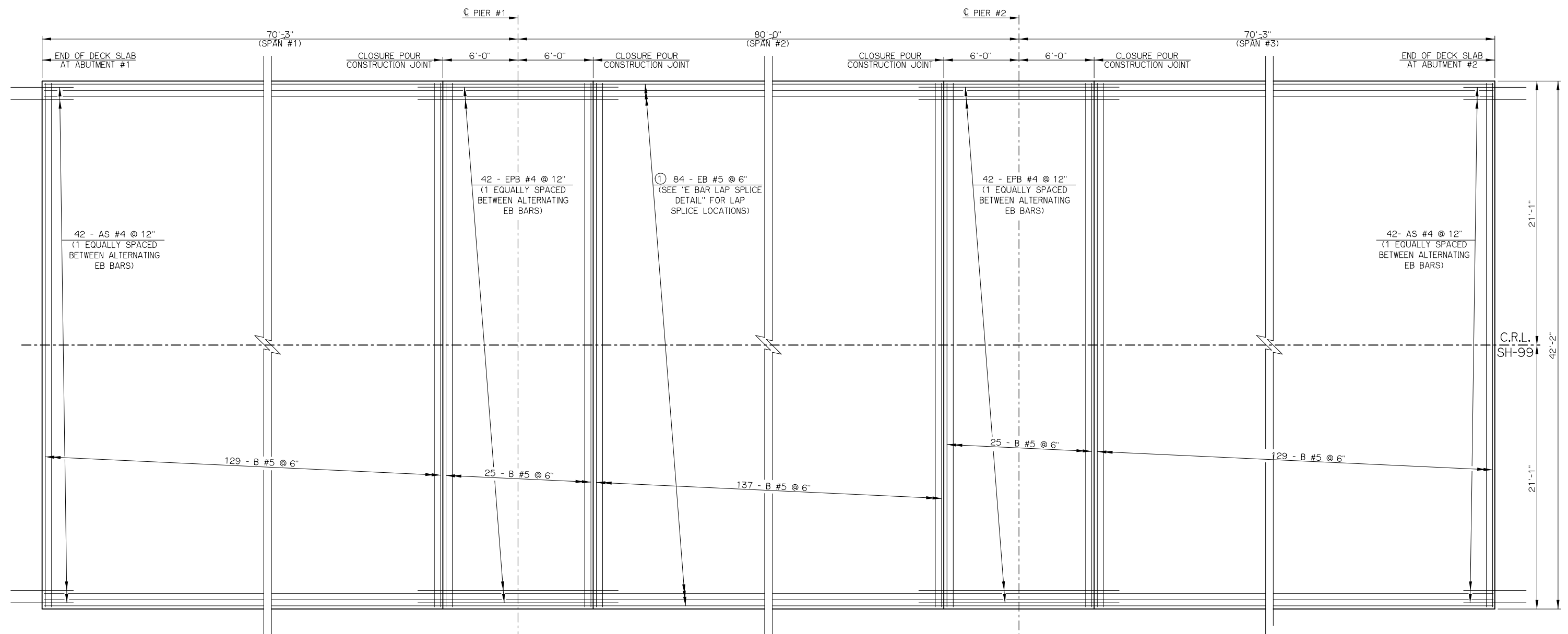


REV. NO.	DESCRIPTION	REVISIONS	DATE



**DECK SLAB NOTES**

EPOXY-COAT OR GALVANIZE STEEL ITEMS USED TO FACILITATE CONSTRUCTION, SUCH AS DECK FORM HANGERS, TY-BAR CLIPS, INSERT WELD ANCHORS, OR OTHER APPURTENANCES, THAT WILL REMAIN IN PLACE IN THE DECK SLAB. EPOXY-COAT IN ACCORDANCE WITH AASHTO M284 OR GALVANIZE IN ACCORDANCE WITH AASHTO M111.

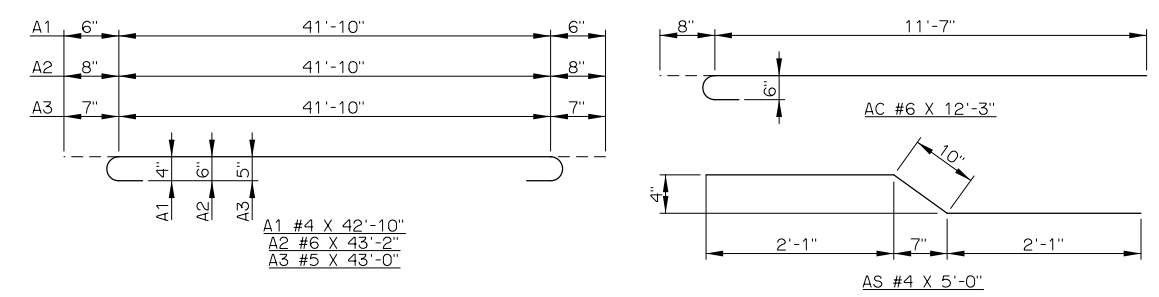
PLACE DECK SLAB CONCRETE ONE SECTION AT A TIME CONSISTENT WITH THE DECK SLAB POURING SEQUENCE DIAGRAM. IN THE EVENT OF AN EMERGENCY, HALT THE PLACEMENT OF CONCRETE BY FORMING A CONSTRUCTION JOINT MADE PERPENDICULAR TO THE DIRECTION OF TRAFFIC OR AS DIRECTED BY THE ENGINEER. DO NOT PLACE ANY HEAVY EQUIPMENT ON THE FINISHED DECK SLAB WITHIN 5 FEET OF ANY CONSTRUCTION JOINT UNTIL CONCRETE IS IN PLACE ON BOTH SIDES OF THE RESPECTIVE JOINT AND AT LEAST 48 HOURS HAS ELAPSED SINCE CONCRETE PLACEMENT.

SEAL ALL DECK SLAB CONSTRUCTION JOINTS WITH HIGH MOLECULAR WEIGHT METHACRYLATE IN ACCORDANCE WITH SECTION 523 OF THE SPECIFICATIONS. INCLUDE ALL COST OF EQUIPMENT AND LABOR FOR THE INSTALLATION OF THE HIGH MOLECULAR WEIGHT METHACRYLATE SEALER IN THE CONTRACT UNIT PRICE OF "SEALER CRACK PREPARATION". INCLUDE ALL COST OF THE HIGH MOLECULAR WEIGHT METHACRYLATE SEALER IN THE CONTRACT UNIT PRICE OF "SEALER RESIN". THE DEPARTMENT WILL NOT MEASURE THE PREPARATION AND SEALER OF EMERGENCY CONSTRUCTION JOINTS FOR PAYMENT.

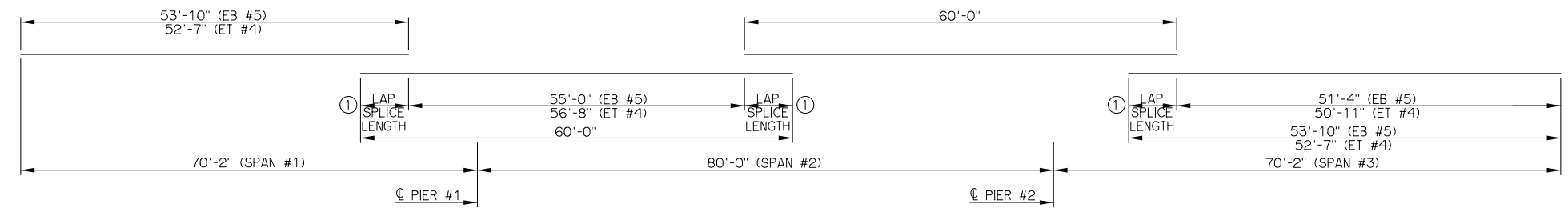
DO NOT SAW-CUT GROOVE WITHIN 6 INCHES OF ALL CONSTRUCTION JOINTS.

**BOTTOM DECK SLAB REINFORCING STEEL LAYOUT**

① MINIMUM LAP SPLICE LENGTH SHALL BE 1'-8" FOR ET BARS AND 2'-6" FOR EB BARS. ALL E BARS SHALL BE CONTINUOUS THRU CLOSURE POUR CONSTRUCTION JOINTS. DO NOT LAP WITHIN 10 FEET OF CENTERLINE OF PIER #1 AND #2.



**BENT REINFORCING STEEL DETAIL**



**E BAR LAP SPLICE DETAIL**

SH-99 OVER BIRCH CREEK	OSAGE COUNTY	Design	RTN	7/12
DECK SLAB REINFORCING STEEL LAYOUT - BRIDGE "C" (SHEET 1 OF 2)		Detail	RTN	7/12
		Check	SBH	7/12
NO. 5730 1228X		Squad:	....	
STATE OF OKLAHOMA		Engr.:	....	
DEPARTMENT OF TRANSPORTATION		JOB PIECE NO. 24261(04)		
		SHEET NO. 119		

Date: 6/7/2017 4:52:48 PM  
 FILE: I:\2010\10K11 Birch S&T Rock Creek\001 - Birch Creek-Final PSE Submittal 6-7-17\119-Deck Slab Reinforcing Steel Layout Bridge C Sheet 1 of 2.dgn  
 Plotted By: rdm